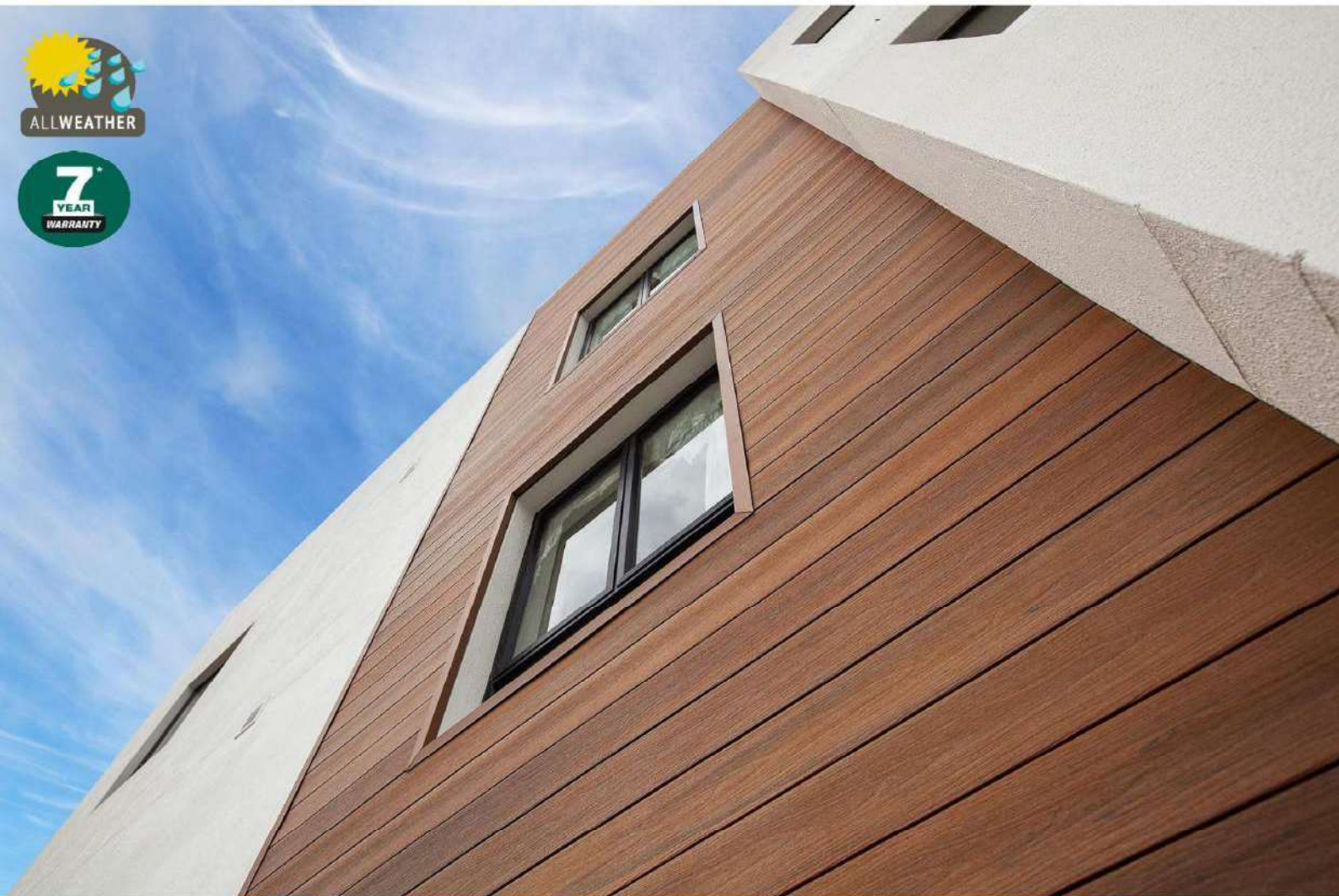


# CASTILLO

Premium Composite Cladding

al fresco  
Live Outdoors



Wood Composite Cladding  
Inspired by Nature



# CASTILLO

Premium Composite Cladding



The Castillo Cladding by Alfresco is the future of **sustainable** timber Facades. They are a combination of ground breaking sustainable design & state of the art production.

Produced in India by Himalaya Global in the advanced 80,000 Sq ft production plant ,Castillo Cladding panels are composite Facades made of **60% natural timber and 40% recycled polymer**.

The Castillo Cladding panels are designed to to look like natural timber but **need zero maintenance**.

# CASTILLO

## Premium Composite Cladding



Alfresco Castillo composite cladding system provides all the low-maintenance, long-lasting and environmental benefits of composite in a smart cladding solution. With Castillo, cladding can now be easily installed even at great heights through the smart engineered clip strip. Now you can enjoy the look, function and lifestyle benefits of ALFRESCO COMPOSITES for your siding and cladding project.

## Superiority by **Design**



Castillo Panel

Castillo panels are unique in both design and installation technique.

Castillo panels are an advanced 2<sup>nd</sup> generation co extruded wood composite cladding with an hybrid polymer capping surface layer, which provides **a unique colour variation like natural timber** and also perform in harsh outdoor conditions.

The installation is using a custom clip strip which allows a fast and sturdy installation.

**Panel size : 163mm x 20mm x 2400mm**

For projects, custom lengths are also possible

## Spoilt for **Choice**

Castillo is available in 8 fabulous colors



Cypress



Maple



Dew



Ash



Nairobi



Oslo



Berlin



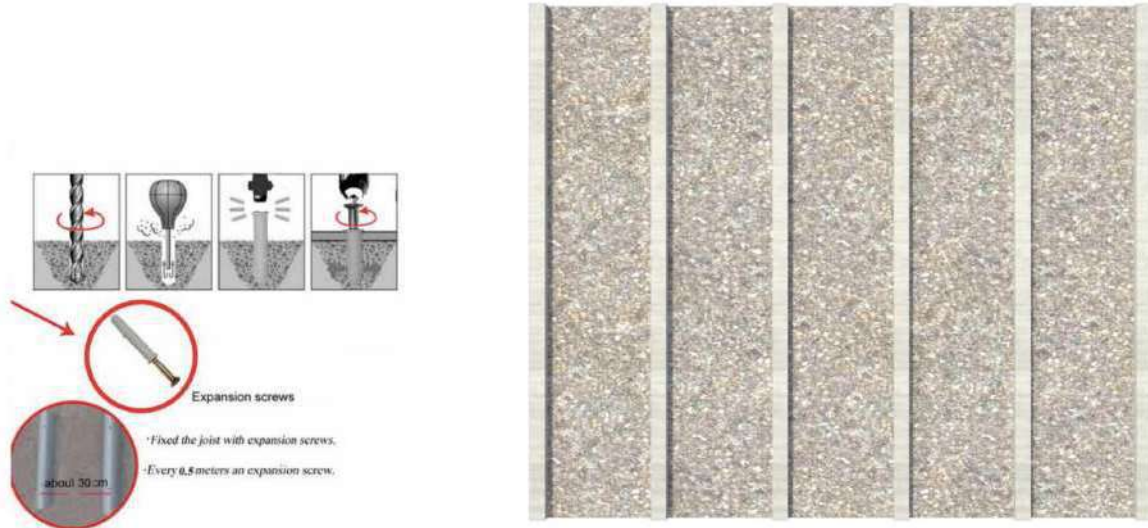
Brazilian Walnut



## INSTALLATION GUIDE FOR CASTILLO CLADDING PANELS

### STEP – 1

Install aluminum hollow tubes of size 50mmx25mm with wood infill on the vertical surface using expansion screws / fasteners. With C/C distance between 30-35cm



### STEP – 2

Install starter Clips at the bottom of the installation to start installation without using visible screws

### STEP – 3

Install the first CASTILLO panel such as the bottom is hooked on the clip and the top is installed with a stainless steel screw at a slanting angle. It is important to note to not use self tapping screws, the panels are always pre drilled and then screwed

